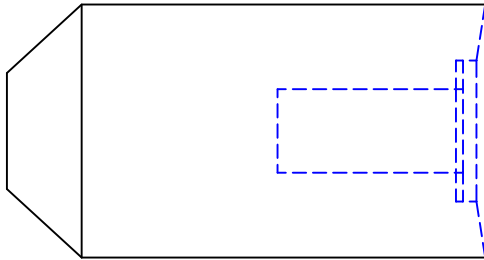




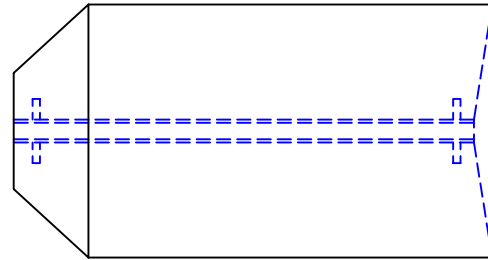
STANDARD PRODUCT DATA SHEET No 3

FOAM PIGS - OPTIONAL EXTRA'S

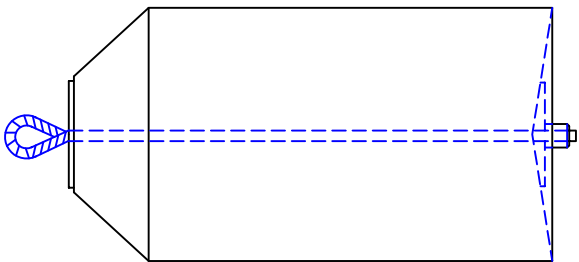
Transmitter / Pinger Cavity



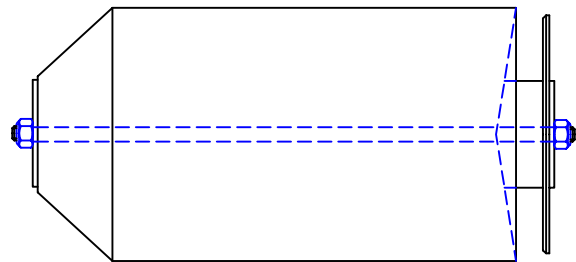
Bypass Facility



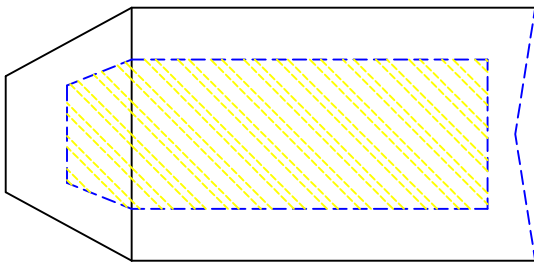
Pulling / Lifting Loop



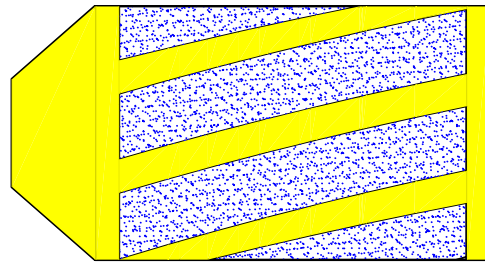
Gauging Plate



Composite Pig (Dual Diameter)



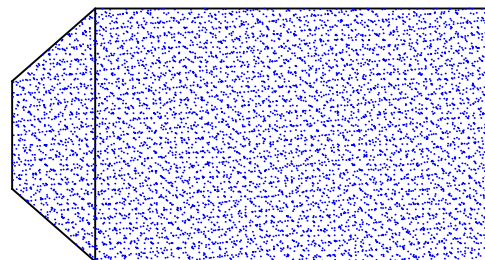
Silicone Band Trim



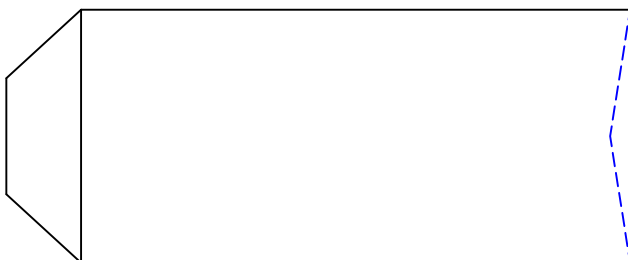
Bi-Directional



Full Abrasive Coating / Full Brush



Extra Long (Traversing unbarred Tees)



Double Dished Bi-Directional Batching



General Information

The Range shown above is only a small selection of optional items, please consult our technical sales department with your required specification.

Propipe Limited, Prospect Way, Park View Industrial Estate, Hartlepool, England. TS25 1UD

Tel : +44 (0)1429 890 190 Fax : +44 (0)1429 890 198