

Introduction to Propipe Limited

Propipe manufactures and supplies a wide range of pipeline pigs and pipeline plugs to leading offshore and onshore companies throughout the world. Our pig-supply scope covers all types of pipeline pigs; foam pigs, disc pigs, cup pigs and on to more complex articulated and multi-diameter designs, capable of running line lengths in excess of 700 km.

Since our launch in 1998, Propipe has achieved phenomenal year-on-year growth. Every pig from Propipe is designed to meet specific requirements of the pipeline.

Designs have been developed, tested and field-proven in some of the most difficult applications known for pigs: -

Multi-Diameter – Propipe has extensive experience in the use of dual and multi-diameter pigs. As well as common sizes such as 8” x 10” and 10” x 14”, Propipe has pigs that work in size range such as 26” x 20”, 24” x 20” and 22” x 18”.



Long Run – The yard-stick used to measure the performance of a pig manufacturer. Using only the highest quality polyurethane wear parts, Propipe has supplied pigs for many large projects with long trunk lines. Project such as Gulfstream in the Gulf of Mexico (36” x 450 miles), Nam Con Son in Vietnam (26” x 230 miles) and West Natuna in Indonesia (26” x 250 miles) have all been successfully completed.

Articulated – With the ever increasing need to tie-in marginal fields to one main trunkline, wye connections are becoming common.

Articulated pigs offer safe solutions to pass through wyes, whilst still negotiating tight radius bends. Propipe has several proven joint designs and has used these on sizes from 6” up to 48”.



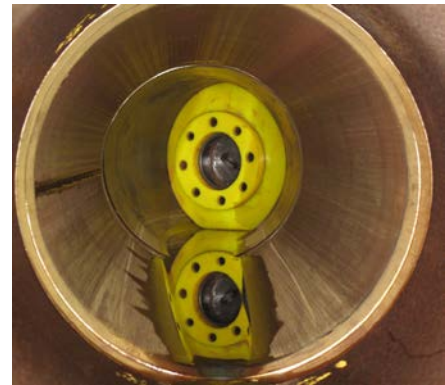
Facilities

- Factory:- 1700m² manufacturing space & 8000m² external pig testing facility (with new 500m² fabrication facility under construction for 2013)



Propipe Ltd

- 24 hour manufacturing capability
- Foam pigs from 0.25" to 72" diameter
- Disc pigs 4" to 60" diameter
- Cup pigs from 6" to 48" diameter
- Pipeline plugs and testing equipment
- In-house Polyurethane manufacture
- Piggability Testing
- Full machining and welding facilities
- Hydrotesting
- CAD with 3D modelling
- Finite element analysis



Piggability Testing



3D CAD & Analysis Facilities

Foam Pigs

- 1/4" to 72" diameters
- Available in densities 2lb/cu. ft up to 22lb/cu. ft
- Supplied bare, spiral wound, criss-cross or fully coated
- Wire brushes available in mild steel, stainless steel, nylon and carbide coated
- Optional towing eyes, jetting ports, pinger cavities, gauge plates, magnets or hardened studs
- Chemical resistant coatings
- Bi-directional capabilities



Disc Pigs

- Dual-diameter
- Multi diameter
- Check valve passage
- Articulated
- Magnetic
- Wye passing
- Sampling
- Pressure relief
- HD Sweeping
- Scraping
- Brushing
- Jetting



Pipeline Plugs & Testers

- Compression Plugs
- Grip tight plugs
- Welding Pigs
- Flange Weld Testers
- Internal Joint Testers
- Inflatable Stoppers
- Pipeline Recovery Tools
- J-Tube Plugs
- Heat Exchanger Plugs
- Subsea Plugs (Diver or ROV) Operated
- Pipe Abandonment Plugs

