

TRIDENT DEEPBLUE EM RECEIVER

Product Overview

Trident DeepBlue is the worlds ONLY High Resolution Digital ROV subsea pig tracking receiver. It is also unique in that it can detect and display all electromagnetic signals detected in the search area.

Data from the DeepBlue is transmitted through the ROV multiplexer via Ethernet (or RS232) to the surface for realtime analysis. This realtime data is analysed by using the Trident PigView software giving the ability to detect multiple pigs on multiple frequencies.



Trident DeepBlue ROV EM Receiver



Instruments

The Trident DeepBlue can capture signals by using the following instrument:

1. Trident 510 Electromagnetic Antenna

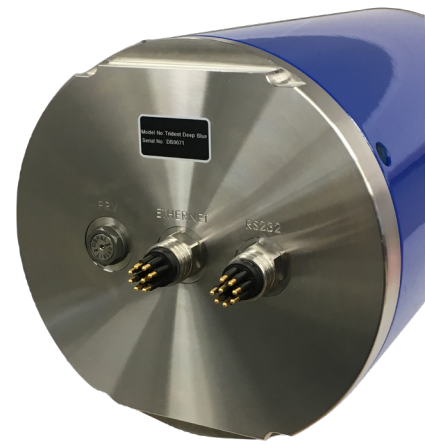


Key Features

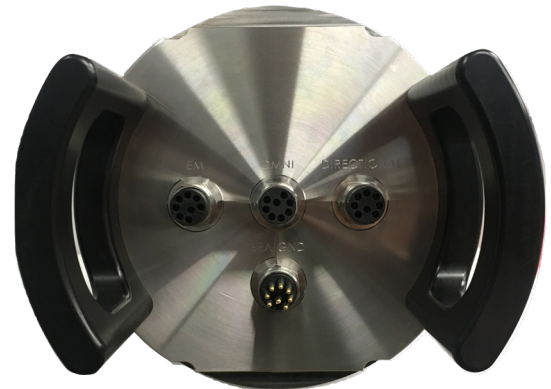
- Electromagnetic detection
- Worlds ONLY Digital ROV Receiver
- Supports both Ethernet & RS232 in ONE unit
- Digital Processing for Multiple Pig Tracking
- Safety PRV - Internal 10PSI Over Pressure

TECHNICAL SPECIFICATION

Housing material	Composite Tube / Stainless Steel
Length	280mm
Diameter	185mm
Weight (in air)	12.5kg
Operating Depth	3000m
Power Source	+24V to +48V
Operating Temperature Range	-5°C to +50°C
Signal Output	RS232 or Ethernet
Input Connector Type	8 Way Micro Sub-Con
Output Connector Type	To match ROV Connection
Pressure Relief Valve (Internal)	10 PSI



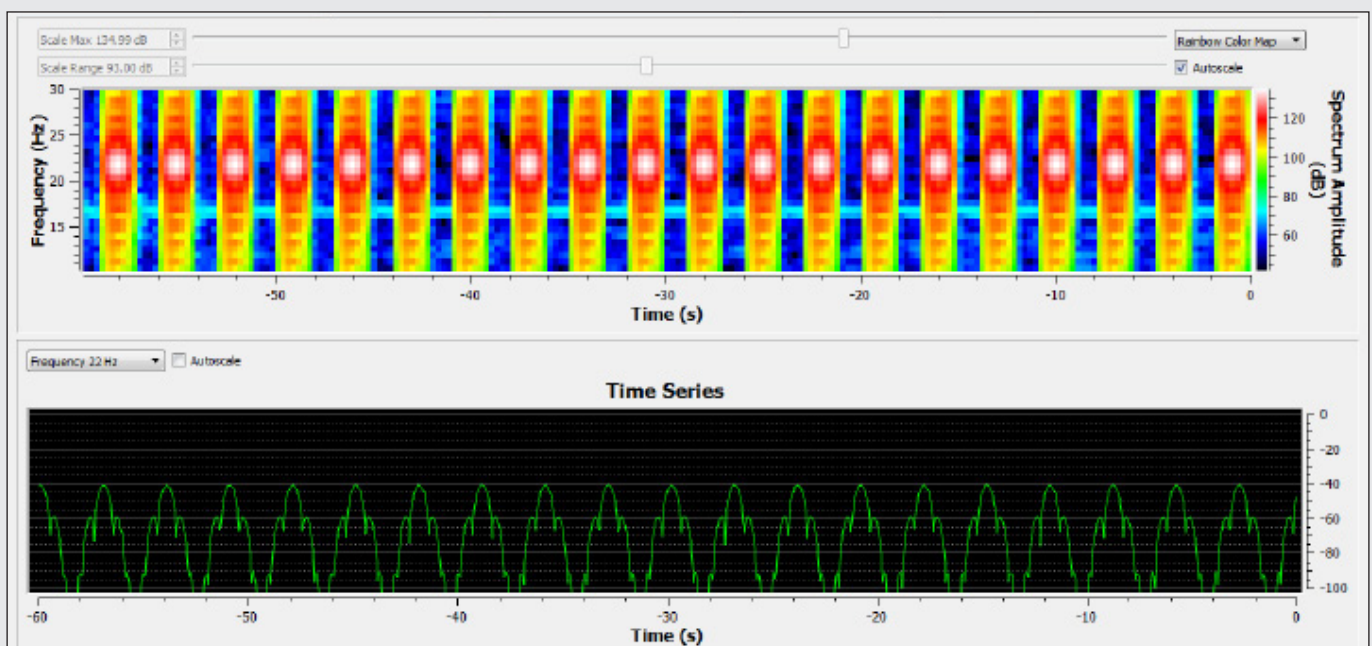
Output Connectors & PRV



Input Connectors (Instruments) & Ground

TRIDENT PIGVIEW

The Trident PigView software analyses the realtime data received by the DeepBlue, an EM example can be seen below:



Phone: [+44 \(0\)1429 872 927](tel:+44201429872927)

Web: propipe.co.uk

