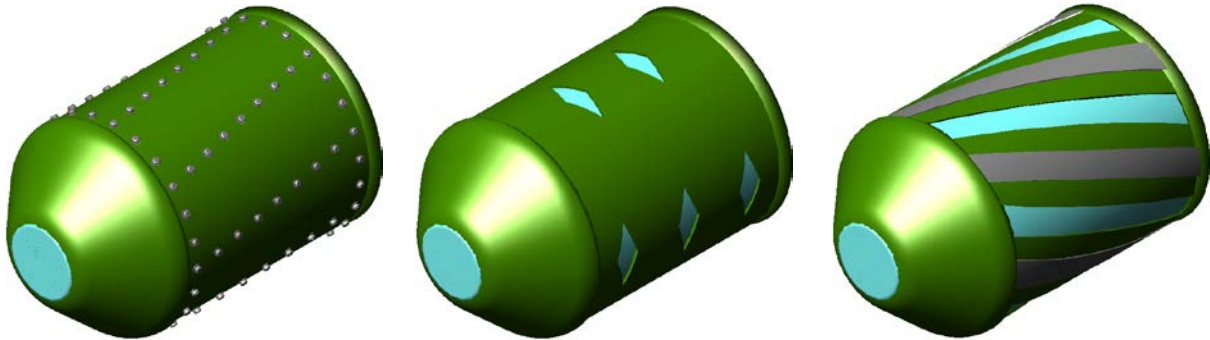


## FOAM PIG SPECIFICATION



### Application

Foam pigs are used for a wide variety of applications, such as for flooding, dewatering and drying, as well as cleaning, gauging and batching operations. Foam pigs can also be used for proving pipelines suitability for pigging with less flexible pig types such as metal bodied pigs.

### General Information

The details shown are for common pig configurations, however various optional extras are available, some of which are listed below:-

Variable Foam Densities (Light, Medium & Heavy)

Cleaning Brushes

Abrasive Coating

De-waxing Pads

De-scaling Studs

Gauging Plate

Tracking Device

High Performance Polyurethane

Pluggable Bypass Ports

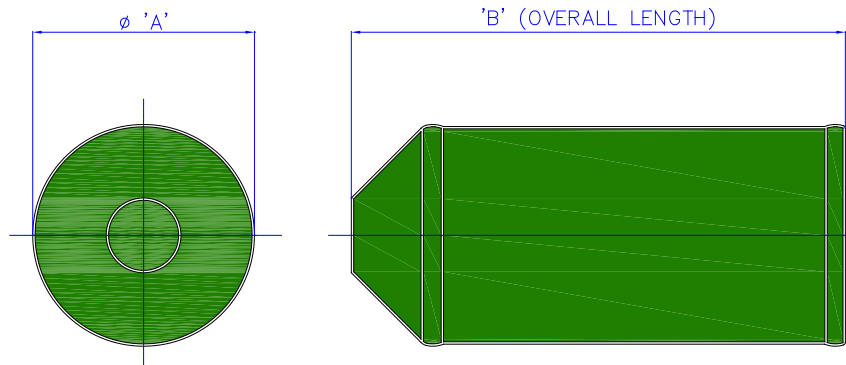
Magnets

Pulling / Lifting Loops

Extended Body (Long Run / Traversing)

|                            |                             |
|----------------------------|-----------------------------|
| <b>Size range</b>          | All sizes are achievable    |
| <b>Bore Passing</b>        | Up to 40% bore restrictions |
| <b>Minimum Bend Radius</b> | 1D                          |
| <b>Materials</b>           | Polyurethane elastomer      |

## PRODUCTION DATA FOR COMMON FOAM PIGS (OFFICE USE ONLY)



| PIG N.S. | BARE FOAM 'A' (mm) | CRISS CROSS 'A' (mm) | FULLY COATED 'A' (mm) | STUD PIG 'A' (mm) | WIRE BRUSH 'A' (mm) | LENGTH 'B' (mm) | AVERAGE WEIGHT (Kg) |
|----------|--------------------|----------------------|-----------------------|-------------------|---------------------|-----------------|---------------------|
| 2"       | 51.3               | 55                   | 55                    | 60                | 60                  | 100             |                     |
| 2.25"    | 57.7               | 62                   | 62                    | 67                | 67                  | 113             |                     |
| 2.75"    | 64.1               | 69                   | 69                    | 73                | 73                  | 127             |                     |
| 2.75"    | 70                 | 75                   | 75                    | 77                | 77                  | 133             |                     |
| 3"       | 76                 | 80                   | 80                    | 84                | 84                  | 147             |                     |
| 3.25"    | 83                 | 87                   | 87                    | 90                | 90                  | 156             | 0.4                 |
| 3.5"     | 89                 | 93                   | 93                    | 86                | 86                  | 174             |                     |
| 3.75"    | 95                 | 99                   | 99                    | 102               | 102                 | 181             |                     |
| 4"       | 102                | 106                  | 106                   | 109               | 109                 | 195             |                     |
| 4.25"    | 108                | 112                  | 112                   | 115               | 115                 | 205             | 1.0                 |
| 4.5"     | 114                | 119                  | 119                   | 122               | 122                 | 217             |                     |
| 4.75"    | 121                | 126                  | 126                   | 129               | 129                 | 230             |                     |
| 5"       | 127                | 132                  | 132                   | 134               | 134                 | 242             |                     |
| 5.25"    | 133                | 138                  | 138                   | 142               | 142                 | 255             |                     |
| 5.5"     | 140                | 145                  | 145                   | 147               | 147                 | 265             |                     |
| 5.75"    | 146                | 151                  | 151                   | 154               | 154                 | 258             |                     |
| 6"       | 152                | 156                  | 156                   | 159               | 159                 | 290             |                     |
| 6.25"    | 159                | 164                  | 164                   | 167               | 167                 | 300             | 1.7                 |
| 6.5"     | 173                | 177                  | 177                   | 180               | 180                 | 330             |                     |
| 6.75"    | 183                | 188                  | 188                   | 190               | 190                 | 350             |                     |
| 8"       | 194                | 199                  | 199                   | 202               | 202                 | 380             |                     |
| 8.25"    | 202                | 207                  | 207                   | 223               | 223                 | 380             | 2.8                 |
| 8.5"     | 210                | 215                  | 215                   | 228               | 228                 | 400             | 3.2                 |
| 10"      | 226                | 232                  | 232                   | 235               | 235                 | 430             | 3.8                 |
| 10"      | 244                | 250                  | 250                   | 260               | 260                 | 453             | 4.7                 |
| 10"      | 253                | 259                  | 259                   | 269               | 269                 | 470             | 4.5                 |
| 10"      | 259                | 266                  | 266                   | 277               | 277                 | 460             | 5.7                 |
| 10"      | 266                | 273                  | 273                   | 285               | 285                 | 495             |                     |
| 12"      | 282                | 290                  | 290                   | 299               | 299                 | 505             |                     |

|     |      |      |      |      |      |      |          |
|-----|------|------|------|------|------|------|----------|
| 12" | 299  | 209  | 209  | 315  | 315  | 505  |          |
| 12" | 308  | 315  | 315  | 325  | 325  | 572  | 7.4      |
| 12" | 317  | 325  | 325  | 335  | 335  | 586  |          |
| 12" | 321  | 329  | 329  | 337  | 337  | 586  |          |
| 14" | 327  | 336  | 336  | 345  | 345  | 580  | 8.9      |
| 14" | 334  | 342  | 342  | 352  | 352  | 629  |          |
| 14" | 347  | 356  | 356  | 365  | 365  | 653  |          |
| 16" | 356  | 365  | 365  | 373  | 373  | 730  |          |
| 16" | 382  | 392  | 392  | 400  | 400  |      |          |
| 16" | 386  | 396  | 396  | 406  | 406  | 728  |          |
| 16" | 399  | 409  | 409  | 419  | 419  | 753  |          |
| 18" | 434  | 444  | 444  | 454  | 454  | 819  | 17       |
| 18" | 450  | 459  | 459  | 470  | 470  | 849  | 18 fc    |
| 20" | 483  | 492  | 492  | 503  | 503  | 912  |          |
| 20" | 499  | 508  | 508  | 520  | 520  | 942  | 25 fc    |
| 20" | 530  | 539  | 539  | 550  | 550  | 870  |          |
| 20" | 559  | 568  | 568  | 578  | 578  | 1000 |          |
| 22" | 545  | 553  | 553  | 564  | 564  | 1019 |          |
| 22" | 559  | 568  | 568  | 580  | 580  |      | 35       |
| 24" | 584  | 594  | 594  | 604  | 604  | 1100 |          |
| 24" | 603  | 612  | 612  | 623  | 623  | 1136 | 35 bare  |
| 26" | 637  | 646  | 646  | 656  | 656  | 1120 |          |
| 26" | 655  | 664  | 664  | 674  | 674  | 1146 | 54 xx    |
| 28" | 689  | 699  | 699  | 408  | 408  | 1280 | 68 xx    |
| 28" | 700  | 709  | 709  | 720  | 720  | 1319 | 80 fc    |
| 30" | 736  | 747  | 747  | 750  | 750  | 1388 |          |
| 30" | 758  | 770  | 770  | 780  | 780  | 1429 | 80       |
| 32" | 812  | 823  | 823  | 835  | 835  | 1440 | 85       |
| 34" | 792  | 805  | 805  | 815  | 815  | 1450 | 96       |
| 34" | 863  | 875  | 875  | 885  | 885  |      |          |
| 36" | 900  | 913  | 913  | 922  | 922  | 1607 | 102 bare |
| 38" | 914  | 926  | 926  | 936  | 936  | 1510 |          |
| 38" | 930  | 941  | 941  | 952  | 952  | 1695 |          |
| 40" | 995  | 1007 | 1007 | 1017 | 1017 |      |          |
| 42" | 1056 | 1068 | 1068 | 1078 | 1078 | 1834 | 170 fc   |
| 44" | 1120 | 1132 | 1132 | 1142 | 1142 | 2045 |          |
| 48" | 1210 | 1222 | 1222 | 1233 | 1233 | 2103 |          |
| 48" | 1228 | 1240 | 1240 | 1250 | 1250 | 2110 |          |
| 56" | 1426 | 1440 | 1440 | 1450 | 1450 | 2305 | 295      |

### General Information

All details shown above are for information only and are subject to changes. Fully detailed general arrangement drawings are available on request from our technical sales department